

IN HER MIND SHE IS DEAD ALREADY

INVESTMENT OPPORTUNITY – FEATURE FILM

GENRE: PSYCHOLOGICAL DRAMA

PROPOSED BUDGET: £100K (CURRENTLY 50% FUNDED)

SYNOPSIS:

TALIA, A CYNICAL TEENAGER WHO HAS BECOME OBSESSED WITH DEATH DISCOVERS A RECLUSIVE AND MENTALLY UNDER-DEVELOPED TEENAGE BOY LIVING NEXT DOOR TO HER GRANDMA'S HOUSE. SHE BONDS WITH HIM AND THEY TRY TO ESCAPE THEIR RESPECTIVE TROUBLES BY EMBARKING ON A ROAD TRIP TO THE SEASIDE, BUT TALIA ULTIMATELY DISCOVERS THAT THE DEAD ONLY KNOW ONE THING: IT IS BETTER TO BE ALIVE.

IN FROM THE DARK

KELCHIN FILMS PRESENTS "IN FROM THE DARK" MUSIC BY THE MUSICIAN COSTUME DESIGNER NAME EDITED BY CHRIS GREYBE

PRODUCTION DESIGNERS NAME DIRECTOR OF PHOTOGRAPHY JACK SHELBNOR EXECUTIVE PRODUCER EX PRODUCER 1 EX PRODUCER

SCREENPLAY BY MIKEY MURRAY STORY BY GEORGINA MITCHELL

PRODUCED BY RACHEL SCARROTT & CHRIS GREYBE DIRECTED BY MIKEY MURRAY

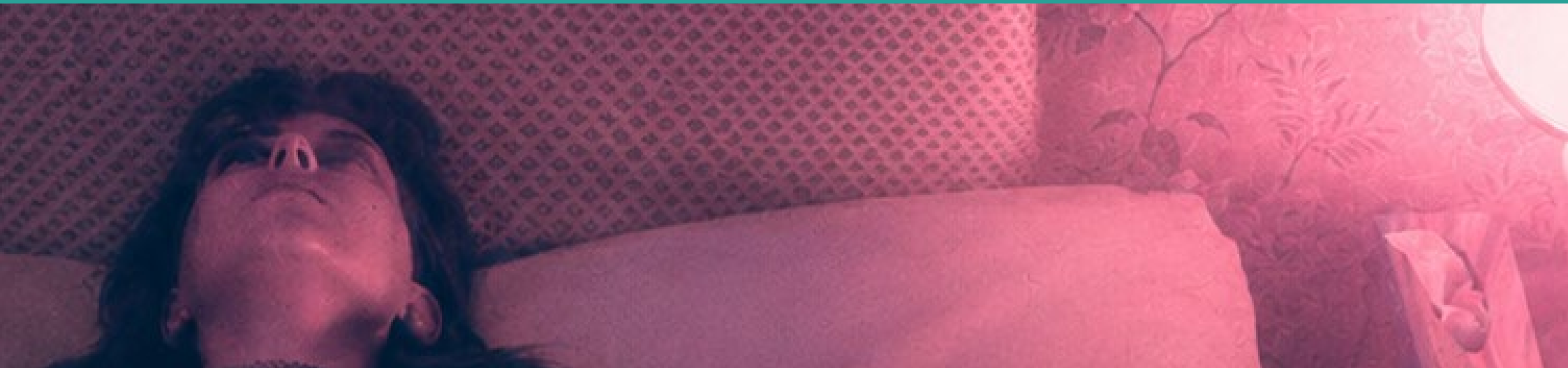
KELCHIN' FILMS

HIGHLIGHTS

The perfect second feature film for Lincoln-based director Mikey Murray, who has developed the film from new writer Georgina Mitchell's screenplay. Mikey proved that he knows how to get the best out of a low-budget project with his debut film *Mind-Set* (2022), which had a UK cinema release and has been distributed internationally. This film will be made and produced in the Lincolnshire and Humber area with a clear focus on showcasing local working-class talent. It will turn the spotlight on an underrepresented area of the UK on-screen and be shot in an innovative and sustainable way with actors who are originally from the surrounding area. Our team are dedicated to creating opportunities for emerging filmmakers to gain their first experience working on a film set in an industry that is notoriously difficult for working-class voices.

The commercial ambitions of the film are also a priority. The low-budget nature of the production, combined with our film industry contacts and knowledge, maximises the potential for financial return on investment. We already have one of the UK's best known Casting Directors, Des Hamilton (*This Is England*, *Top Boy*) on board to help us secure the high quality and recognisable cast required to give the film the best possible chance for success internationally. At 100k budget, and with a recognisable cast, investors can expect the strongest chance of return on investment and a back-end profit share, as well as the opportunity to attend a local project premiere, rub shoulders with the cast, and support new talent in Lincolnshire and Humber.

A raw and intimate psychological drama that follows the emotional journey of Talia – a teenage outsider preoccupied with death and haunted by deep, unresolved questions about where she fits in a world that seems to reject her. Inspired by The Guardian's ongoing article about the UK women who have been murdered by men, this film explores how Talia overcomes a perilous encounter with a fledgling serial killer, and learns to appreciate the importance of living her life. Similar to powerful TV show *Adolescence*, *In From the Dark* addresses themes concerned with violence against women, but in this case the focus is on the female lived experience. And despite its difficult themes and imagery, the film is ultimately an uplifting female rite-of-passage.



With Des Hamilton on board as casting director, open casting to find new rising stars is the best approach for our two teen leads. While casting established actors in the senior roles brings the required level of star quality.

TALIA (17-18) – A teenager with suicidal thoughts, who is still dealing with the devastating loss of her mother and has been left in the care of her stepfather. She initially believes that she is destined to be just another statistic.

ARLO (18) – A reclusive eighteen-year-old who is mentally much younger. He has been restricted from the outside world and kept house-bound since lockdown due to an inability to function in a society that doesn't fully understand him.

JIM (40-45) – A grieving son who has recently lost his mother and is in the process of clearing out her house. He wants to protect his teen stepdaughter, Talia, but struggles to understand how to communicate with her effectively...



TOBY KEBELL
(Control,
Black Mirror)



JOHN HOLLINGWORTH
(Poldark, Mr Bates vs
The Post Office)



EMUN ELLIOTT
(Game of Thrones,
The Gold)

CHARACTERS / POTENTIAL CAST

KATH (40-45) – Over-protective and religiously motivated mother who keeps her son Arlo hidden from the world. She is caught in a disturbing and emotionally complex cycle of financial dependence through an older man (Charlie), who is abusive towards her and her son.

CHARLIE (56-62) – Father figure to Arlo who is gaslighting Kath and is intent to keep both her and Arlo away from public life. He's using Kath for sexual gratification, and is worried about Arlo's increasingly unreliable personality.



VICKY McCCLURE
(This Is England,
Line of Duty)



KATE O'FLYNN
(Peterloo,
Widow's Bay)



SHERIDAN SMITH
(The Royale Family,
Cilla)



RALPH INESON
(The Witch,
Frankenstein)



DAVID MORRISSEY
(State of Play,
The Walking Dead)



STEVE PEMBERTON
(League of Gentlemen,
Killing Eve)

CREATIVE TEAM:



Writer / Director – Mikey Murray

Mikey is a Scottish BAFTA winning, writer/director who studied MFA Screenwriting and Directing at UCLA's prestigious film school after securing a \$40,000 scholarship from David Jacobs (creator of Dallas). His first feature film, *Mind-Set* (2022) won Manchester International Film Festival and was shortlisted for Best Debut Director at the British Independent Film Awards; gaining cinema and VOD distribution in the UK and USA, critical success on Mark Kermode's acclaimed film podcast and a 4-star review in *The Guardian*. He has written for and directed UK acting talent such as Kate Dickie, Jason Isaacs, Steve Oram and David Hayman.



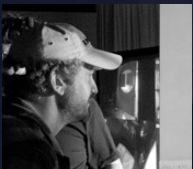
Writer – Georgina Mitchell

Georgina is a new working-class writer who graduated from the University of Lincoln's BA Film Production programme. Her screenplay *In From The Dark* received high commendation and was deemed a first-class piece of work; It will be her first professional writing credit and was the motivation for this entire project.



Producer – Rachel Scarrott

Rachel has a strong track record of making documentary films for the BBC, ITV, Channel 4, The History Channel and Discovery. Her credits include: *Little Angels*, *Robert Winston's Child of Our Time*, and *The Deaf Holocaust*. She is also an experienced Edit and CGI producer who has worked on blue chip series such as *Unearthed*, *Strip the Cosmos* and *Tony Robinson's Birth of Britain*. Rachel is passionate about giving a voice to underrepresented people and she delivers a 12-week 'set-ready' course that helps young people enter the UK screen industry.



Producer/Editor – Chris Greybe

Chris has spent 17 years working in Film, TV and Advertising in the field of post-production. He has edited, colour graded and managed workflows on TV shows such as BBC's *Horizon* and Channel 4's *One Born Every Minute*. He has worked for Disney, both on-set in major films such as *Maleficent* (2014) and as a full-time promo editor. He has been nominated for four advertising awards for editing and is currently developing a post-production textbook in conjunction with Tristen Hey from Company 3, one of the UK's largest post-production companies.



Cinematographer – Jack Shelbourn

Jack has shot a wide range of content from feature films to promos and his work has been screened at the British Society of Cinematography's Emerging Cinematographers event. He shot the award-winning *Mind-Set* (2022) with Mikey and he has developed a specialism in sustainable shooting practices that reduce a film's carbon footprint without compromising the visual quality of a film. He has presented his sustainability in filmmaking research at TEDx forums.

RETURN ON INVESTMENT

TOTAL INVESTMENT REQUIRED - £50,000 (50% SHARES AVAILABLE).

£1000 = 1% SHARE. INVESTORS RECOUP INITIAL INVESTMENT + 20%, FOLLOWED BY THEIR PERCENTAGE SHARE.

Example: If *In From The Dark* grossed £500,000 box-office worldwide the 'Waterfall' of return works as follows (in order)...

1. Cinemas take 50% = £250k
2. Sales/Distribution take 25% = £125k
3. Investors recoup (inclusive of 20% return) = £60k
4. Shareholder returns = £65k

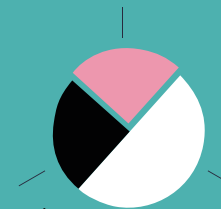
In this scenario a £10,000 investment would return £18,500 - 12k against initial investment (stage 3) + additional 6.5k (stage 4: 10% share of additional profit).

£200k total box-office gross is the break-even point for investors.

* Self-distribution is potentially an option, which removes high percentage sales agent / distribution fees (stage 2) and increases potential return margin for shareholders.

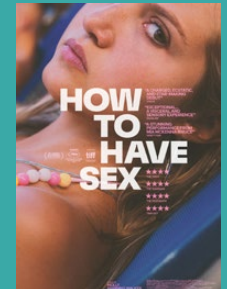
BOX-OFFICE RETURNS BREAKDOWN

Investors/Share Holders 25%



Distributor/
Sales Agents
etc 25%

Cinemas 50%



Similar successful indie films like *Scrapper* (2023) and *How To Have Sex* (2023) both made approximately £900,000 global box-office each.

POTENTIAL PATH TO EARLY RETURNS:

Mikey's debut film *Mind-Set* averaged £330 gross per cinema screening (even with limited self-distribution in UK cinemas). If *In From The Dark* hit that same average, a one-week cinema run across 100 screens would see the film hit a return on investment.

There are approximately 800 cinemas in the UK, 5500 in US and 2000 in France. A successful international cinema run is achievable through recognised cast, reputation through strong festival and critical acclaim, and penetrative marketing and distribution.

LONG HAUL returns are achieved via other routes to market. These include:

- Video on Demand (online revenue from all global territories)
- Airlines
- TV rights
- Talent that creates longevity of interest (i.e. future stars in young cast, future career of director)

